

Das Veilchen (Page 1)

K. 476

The piano introduction consists of two staves in 2/4 time with a key signature of one sharp (F#). The right hand features a melodic line with eighth and sixteenth notes, while the left hand provides a rhythmic accompaniment with chords and single notes.

The vocal line is a single staff in 2/4 time with a key signature of one sharp. It begins with a whole rest followed by a quarter note G4, then a quarter note A4, and a quarter note B4.

Ein Veil chen auf der

The piano accompaniment for the first vocal phrase consists of two staves. The right hand has a steady eighth-note accompaniment, and the left hand has a similar accompaniment with some chordal textures.

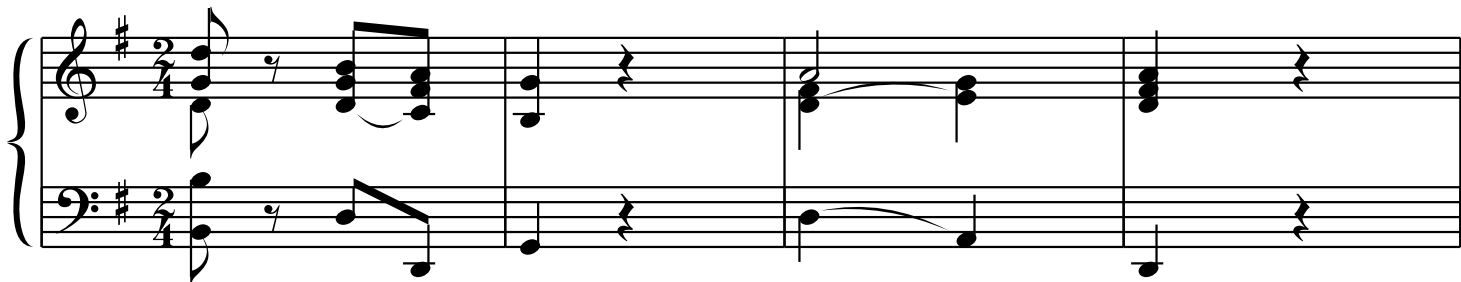
The vocal line continues with a melodic line of eighth and sixteenth notes, maintaining the 2/4 time and one sharp key signature.

Wie se stand, ge bückt in sich und un be kannt: es war ein

The piano accompaniment for the second phrase consists of two staves, continuing the musical texture established in the first phrase.



her zig's Veil chen. Da kam ein? jun ge Schä fer in mit



leich tem Schritt und mun term Sinn da her, da



her, die Wie se her, und sang.

